





EDH1

OD: 6.0mm

Torque:0.6~1.1kgf-cm (one side)

Life test:30K+/-30%

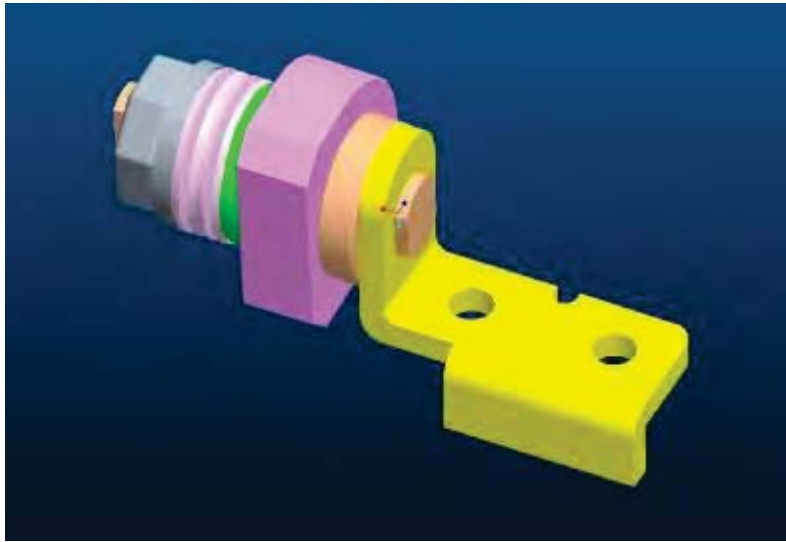
Function:

a. Auto lock

b. Free stop:10~180 degree



DAU
COMPONENTS



EDH2

OD: 6.0mm

Torque:1.2~1.7kgf-cm (one side)

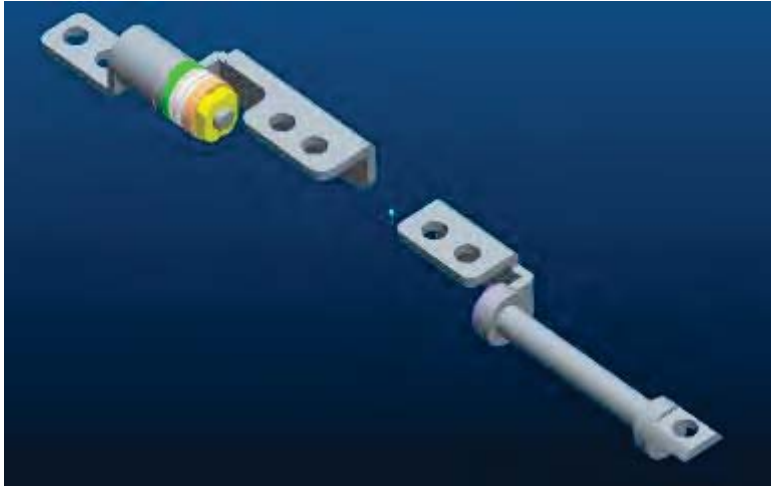
Life test:30K+/-30%

Function:

a. Auto lock

b. Free stop:10~180 degree





EDH3

OD: 6.0mm

Torque:1.4~1.8kgf-cm (Main Hinge)

0~0.5kgf-cm(Dummy Hinge)

Life test:20K+/-20%

Function:

a. Auto lock

b. Free stop:10~180 degree





EDH4

OD: 6.0mm

Torque:1.0~1.5kgf-cm (one side)

Life test:20K+/-20%

Function:

a. Auto lock

b. Free stop:10~180 degree

